

Mounting instructions Leica P Cubes

This guide provides step-by-step instructions for assembling a Leica P filter cube (Chroma part numbers [91050](#) and [91051](#)), designed for precise alignment of optical filters in fluorescence microscopy systems. Proper assembly ensures optimal performance and system reliability.

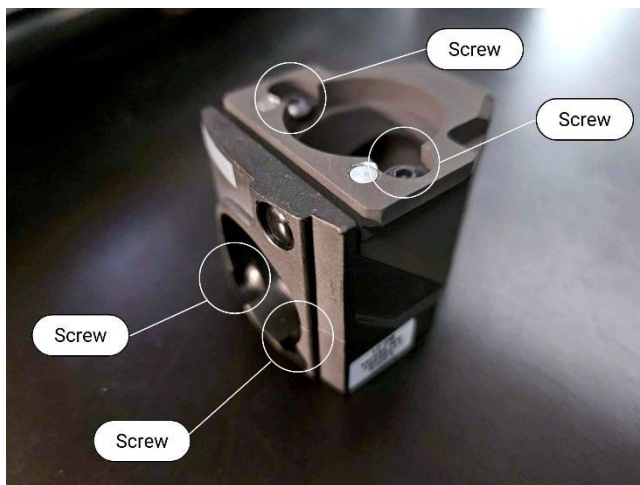
For those new to handling optical filters, we recommend reviewing our [Cleaning & Handling Instructions](#) before assembling your filter cube.

Required filter sizes

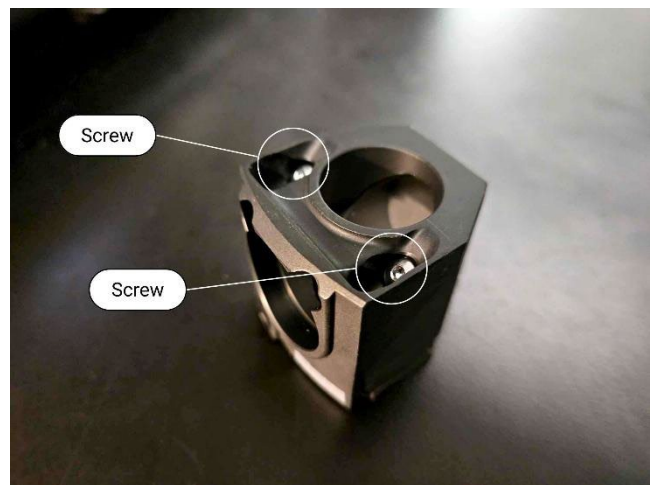
Exciter (x)	Ø25mm
Emitter (m)	Ø25mm
Dichroic	25.5 x 36mm

Required tools

- 2mm hex driver



Step 1: Remove the four small screws holding the cube together, two inset on the top and two inset on the front. Each screw has a small washer as well.



Step 2: Remove the two long screws in cube in the photo to separate the cube halves.



Step 3: Place the cube half with the beam splitter frame on a stable surface to keep the cube level.



Step 4: Place the beam splitter in the cube with the arrow on the side of the filter point up.



Step 5: Rest the other half the cube on top of the half with the beam splitter, aligning the screw holes. Once aligned, use the hex driver to mount the two longer screws.



Step 6: The exciter goes in the exciter port on the front of the cube with the arrow pointing in towards the beam splitter.
Secure the exciter with two screws.



Step 7: The emitter goes into the emitter port on the top of the cube with the arrow pointing in towards the beam splitter.
Secure the filter with the two remaining screws.



Step 8: Fully assembled cube