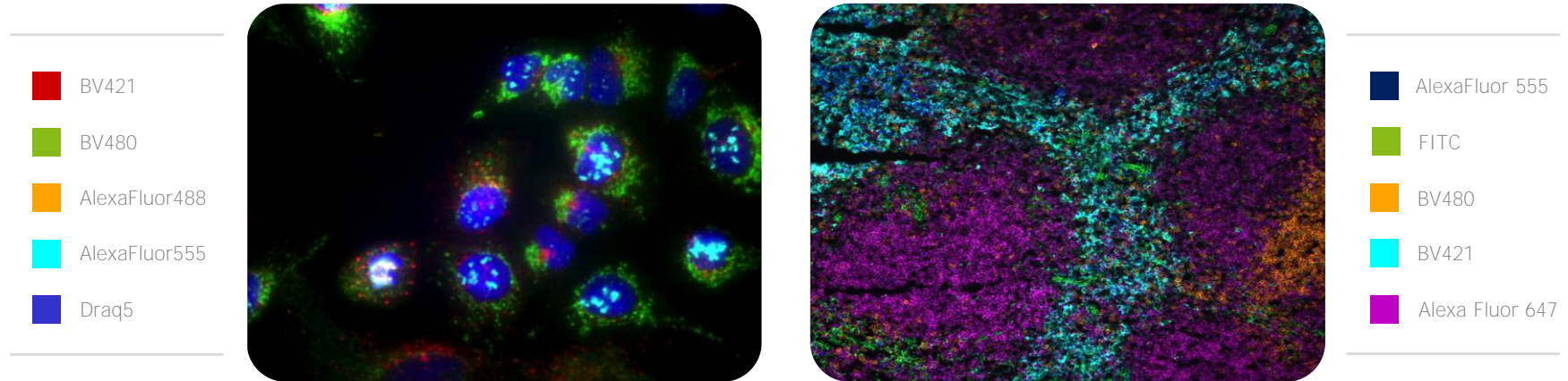


5-CHANNEL FLUORESCENCE IMAGING SIMPLIFIED

Reliable Multiplexing for the Non-specialist

Introducing simpler and more reliable 5-channel fluorescence imaging

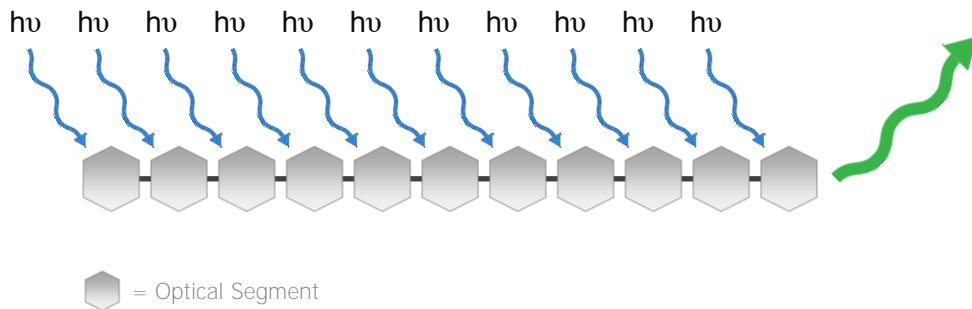
New, brighter fluorochromes from BD Biosciences and optimized filter sets from Chroma Technology make multi-color imaging simpler and more accessible.



Novel polymer chemistry led to the discovery and development of conductive organic polymers.*

These polymers led to the development of a new class of extremely bright fluorescent molecules which have now become the **BD Horizon Brilliant™** family of fluorochromes.

Polymers harvest light, acting like a molecular antenna, due to a very large **Extinction Coefficient** (capacity to absorb photons)

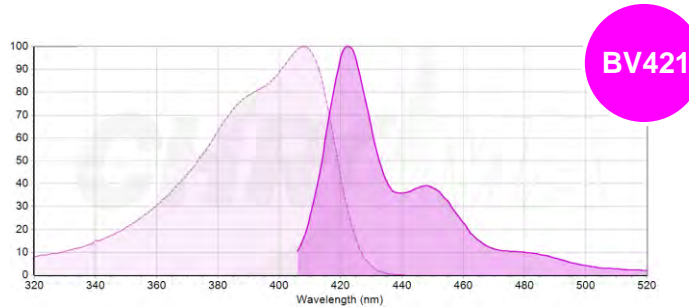


High **Quantum Yield** results in an abundance of photons emitted as fluorescence

* Nobel Prize in Chemistry, 2000 (Alan J. Heeger, Alan G. MacDiarmid and Hideki Shirakawa)

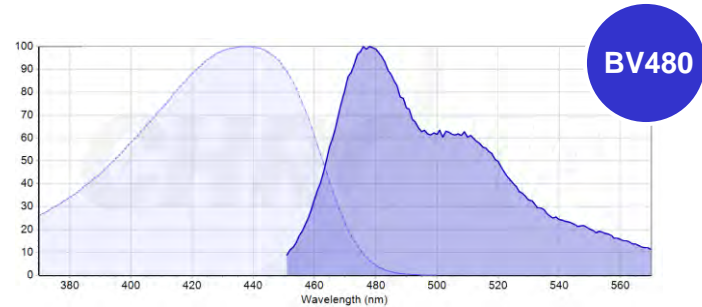
BD Biosciences, a respected leader in the field of cellular analysis, acquired this technology. Brilliant Violet 421 (BV421) was the first of these commercially available polymers.

Recognizing how useful these fluorochromes could be in imaging applications, BD developed BV480. These exceptionally bright, photostable violet and blue fluorochromes are now available for use in microscopy.



$$\epsilon (\lambda_{\text{ex}}) = 2,534,400 ; \Phi_f = 0.70;$$

>50-fold brighter than
Cascade Blue or Pacific Blue



$$\epsilon (\lambda_{\text{ex}}) = 1,450,000 ; \Phi_f = 0.69;$$

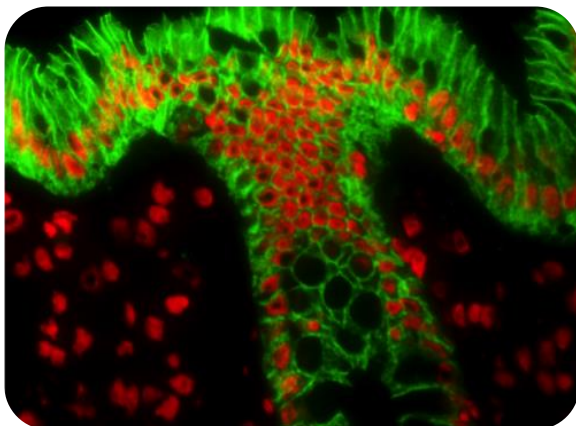
>20-fold brighter than
DEAC or ECFP

Brightness and spectral properties of BD Horizon Brilliant™ Violet Fluorochromes enable:

- Lower levels of excitation energy, minimizing photodamage
- Shorter exposures, increasing speed
- Fewer numbers of molecules (increased sensitivity)
- Increased parameters per sample

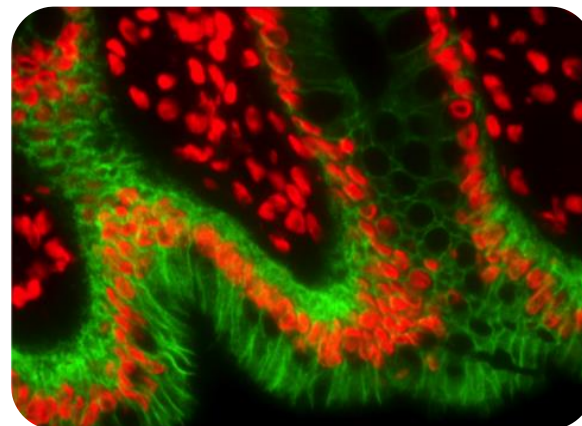
 **BV480**
15ms Exposure

 **Draq5**



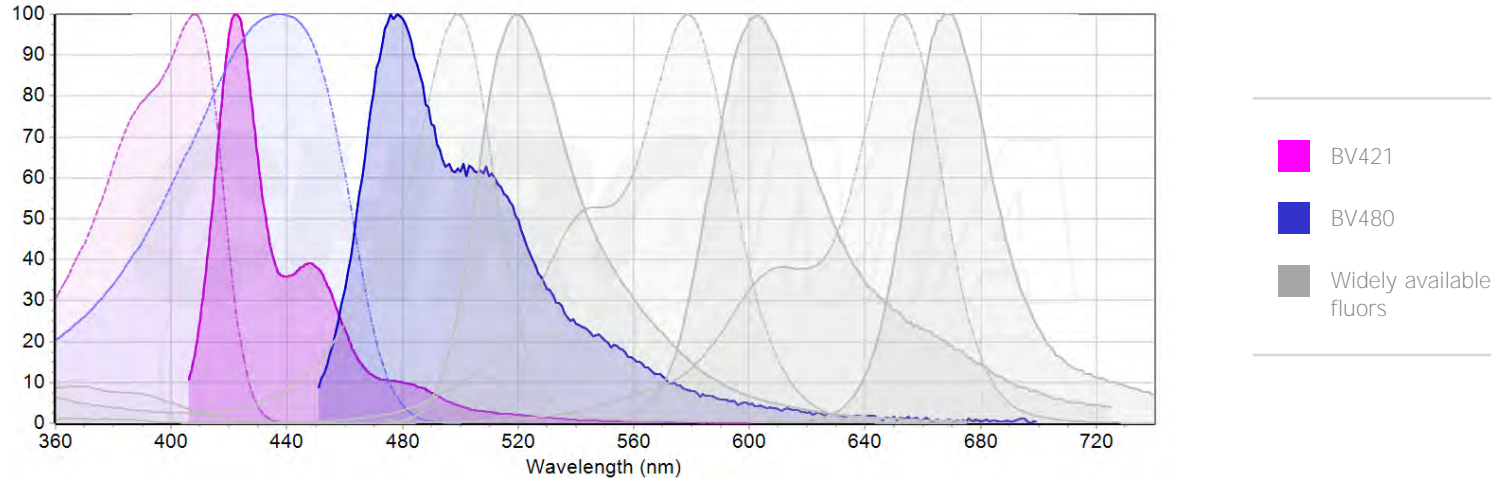
 **Alexa Fluor® 488**
140ms Exposure

 **Draq5**



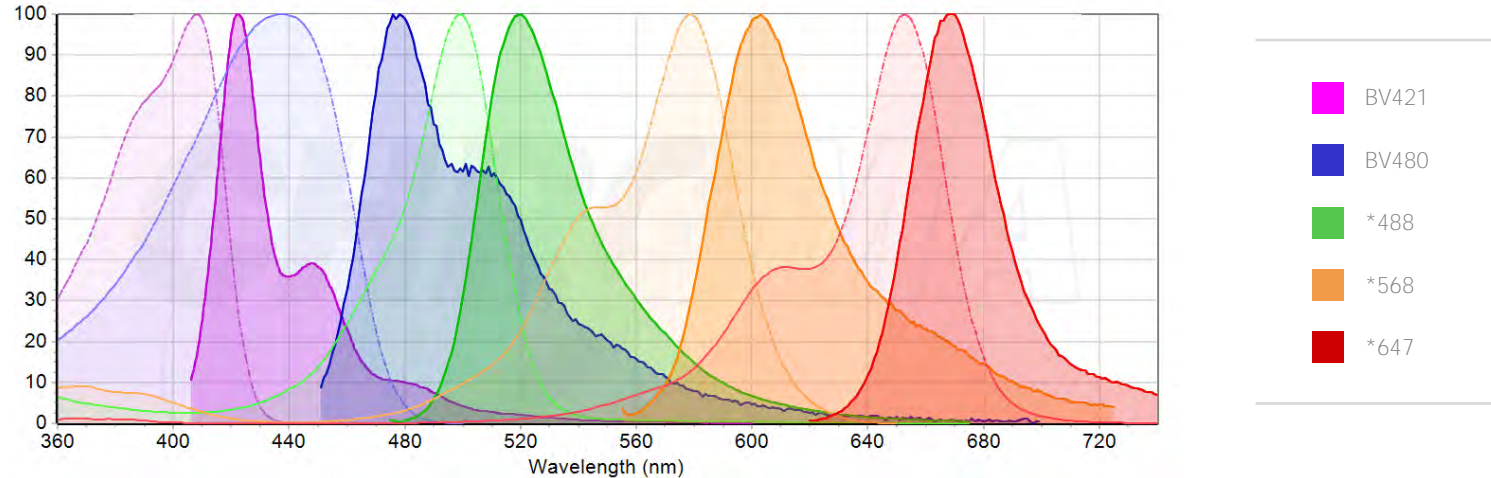
BD Biosciences and Chroma Technology have collaborated to introduce these fluorochromes to help advance fluorescence microscopy.

Chroma Technology recognized the opportunity to make 5-color imaging easily accessible to anyone working with a basic fluorescence microscopy stand. BV421 and BV480 fill a gap in the visible spectrum:



5 reliable fluorescence channels:

Reliable and popular fluors from respected suppliers provide the longer wavelengths. 5 colors, with excitation wavelengths from approx. 390-650nm, and emission wavelengths from approx. 420-700nm allow for the use of standard light sources and cameras:



The equipment you need:



Standard **Microscope**



Standard **Light Source**



Standard **Camera**

What You
Don't Need



Advanced imaging expertise

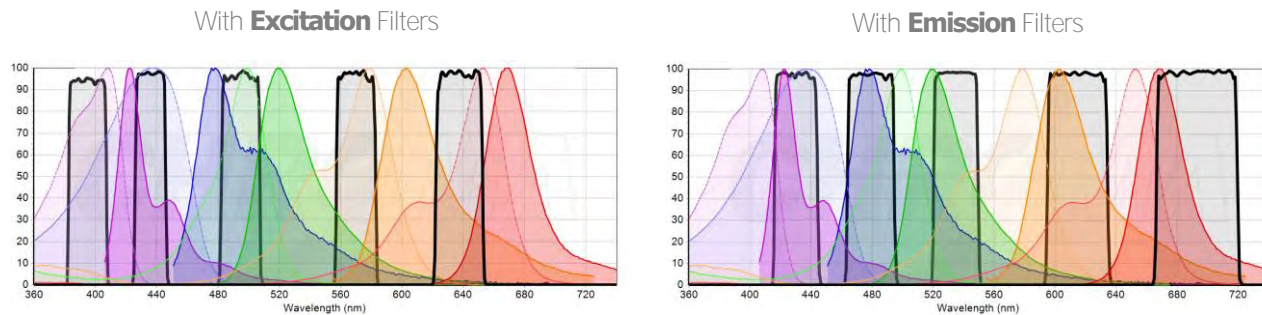


Sophisticated technologies or equipment

The filters you need:

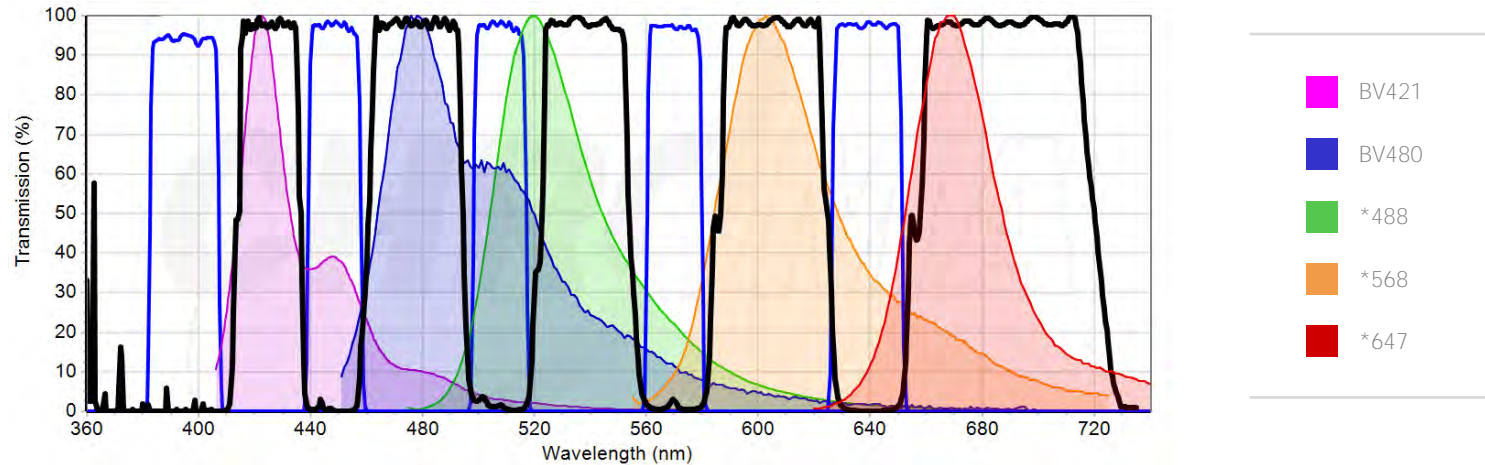
Because these are all very bright fluors, we are able to use narrow-band excitation and emission filters to maximize spectral separation.

Shown here are separate excitation and emission filter graphs for ease of illustration.



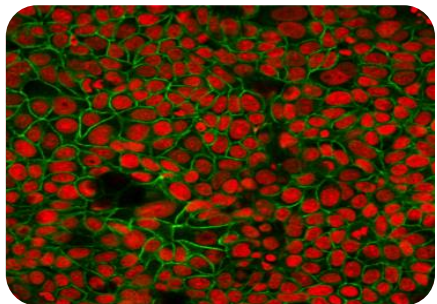
Alternative filter options:

Many workers prefer to use multiband filter sets for multi-channel imaging. Chroma offers 5-band (*or more*) filter sets for use with external filter wheels to house multiple excitation and emission filters with one multiband polychroic mirror in a cube. This allows for even more fluorochromes and fast, efficient image acquisition, including z-stacks.



BD Horizon Brilliant™ fluorochromes excel in fluorescence imaging applications:

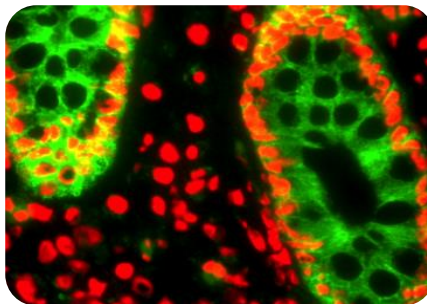
Immunoc**cyto**chemistry



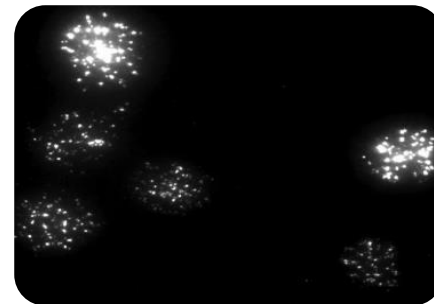
 BV421

 Draq5

Immunoc**histo**chemistry

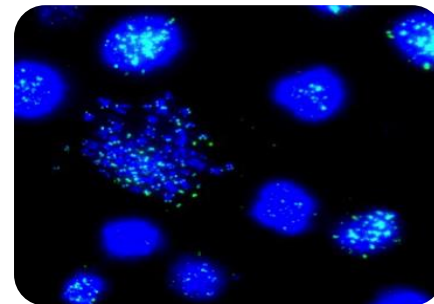
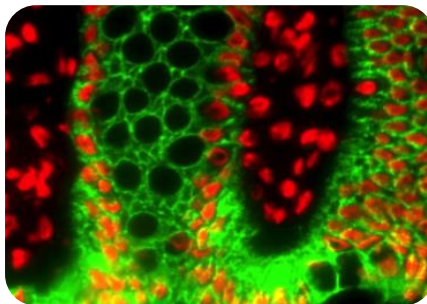
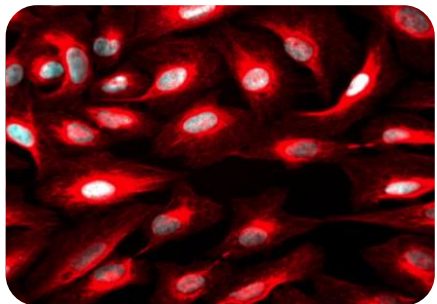


FISH

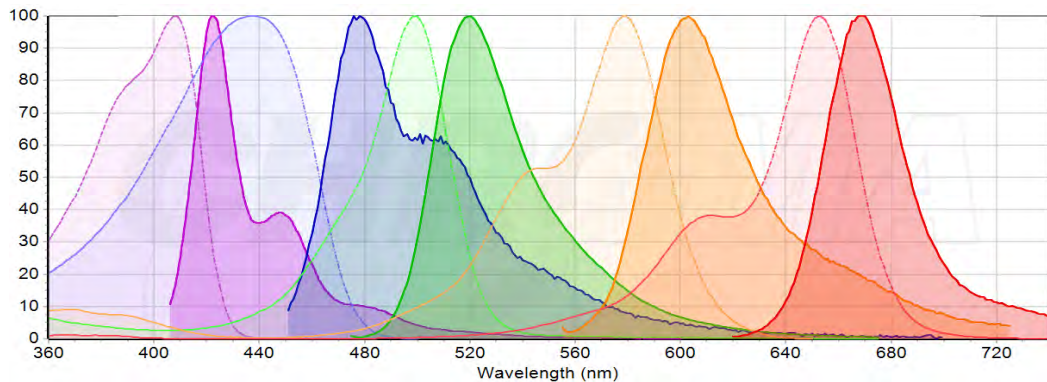


 BV480

 Draq5



Addition of BV421 and BV480 enables more effective multiplexing and flexibility:

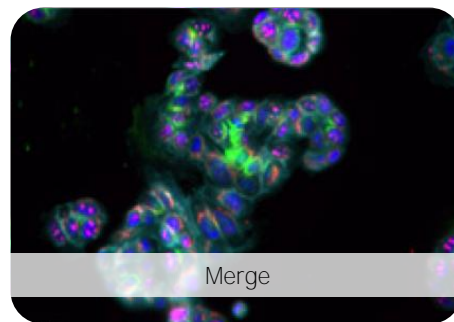
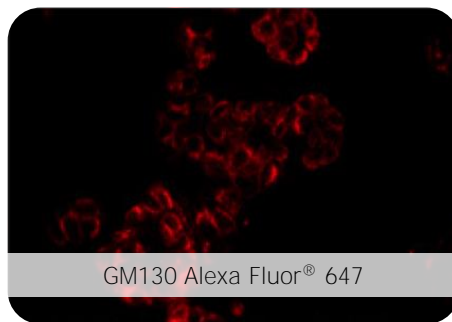
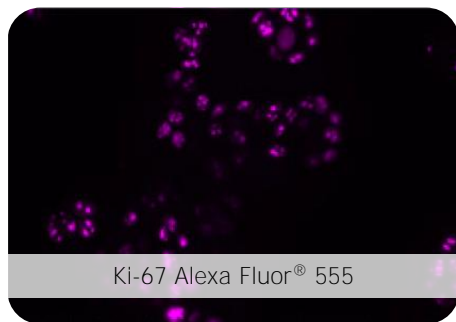
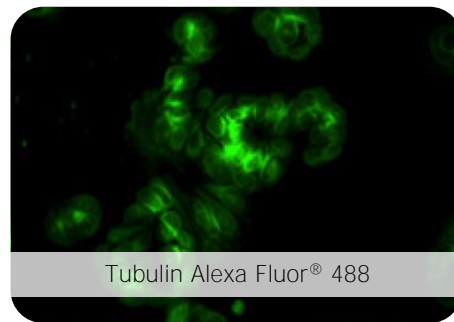
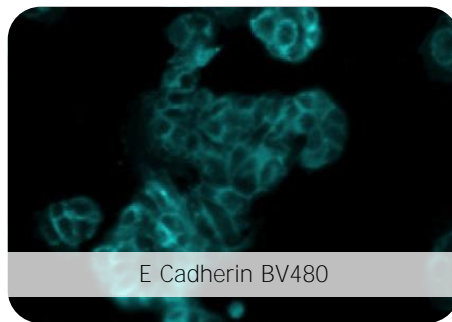
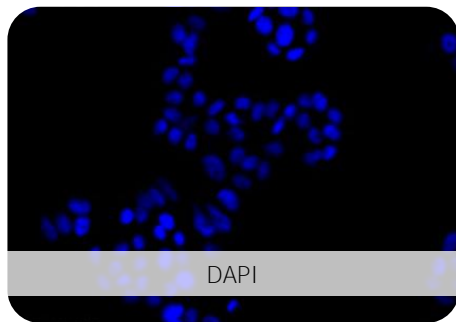


5-Channel Options

BV421	BA480	488 fluor OR Various Green FPs	568/555/546 fluor OR Various Red FPs	Draq5 (DNA)
BV421	BA480	488 fluor OR Various Green FPs	568/555/546 fluor OR Various Red FPs	647 fluor
DAPI (DNA)	BA480	488 fluor OR Various Green FPs	568/555/546 fluor OR Various Red FPs	647 fluor

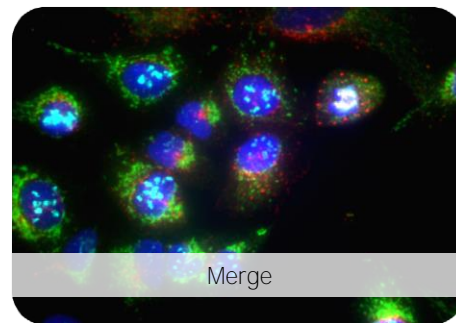
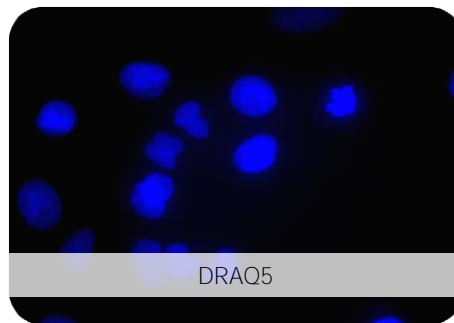
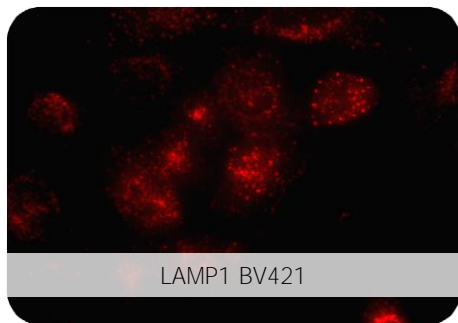
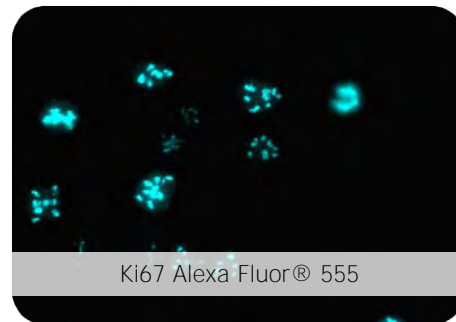
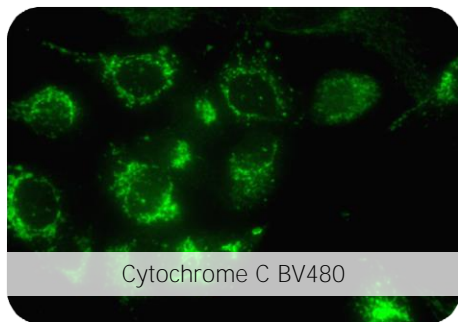
Robust 5-color imaging:

DAPI, BV480, Alexa Fluor® 488, Alexa Fluor® 555, Alexa Fluor® 647



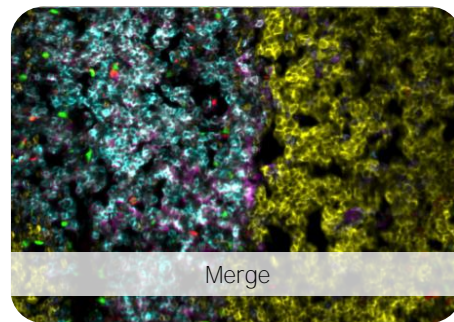
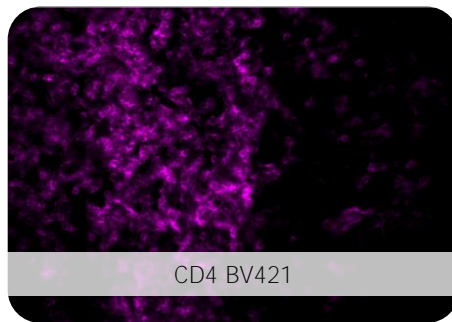
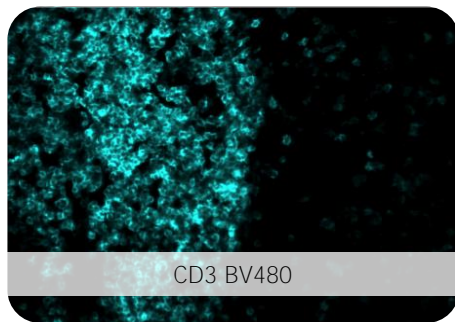
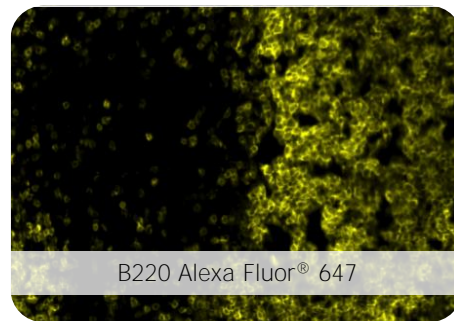
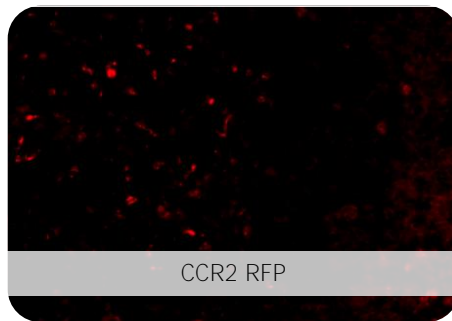
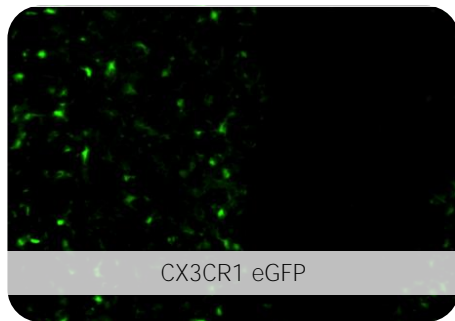
Robust 5-color imaging:

BV480, Alexa Fluor® 488, Alexa Fluor® 555, BV421, DRAQ5

















Robust 5-color imaging:

GFP, RFP, Alexa Fluor® 647, BV480, BV421



Thank you to collaborators in the Catherine Hedrick lab at La Jolla Institute of Allergy and Immunology for data.

Chroma Filter Set Recommendations for 5-channel imaging:

		Recommended		Alternate	
Fluor 1:	 BV421 (or DAPI)	49027			
Fluor 2:	 BV480	49032		49001	
Fluor 3:	 *488 (or various GFPs)	49303		49003	
Fluor 4a:	 *568 (or mCherry)	49031		49306	
Fluor 4b:	 *546, 555 (or TagRFP, mApple, mRuby)	49305		49004	
Fluor 5:	 *647 (or Draq5)	49009			



= Best Compatibility



= Good Compatibility



= Not Compatible

For Best Results

We're providing new tools to workers who use fluorescence microscopy in order to simplify 5-color imaging.

However, as always when immunolabeling, care must be taken to control for variables like non-specific labeling, cross-reactivity and autofluorescence.

BD Horizon Brilliant™ fluorochromes are bright enough to be effectively used as direct immunofluorescence probes, for one-step immunolabeling. This greatly simplifies immunolabeling and greatly reduces non-specific fluorescence and background noise.

When expressing and imaging fluorescent proteins, careful technique and expertise and knowledge of potential problems is required. BV480 provides an extremely bright cyan channel. To optimize the use of fluorescent proteins, use GFP-like or YFP-like proteins along with Red proteins similar to mApple, mRuby, TagRFP.

Summary

Two new bright fluorochromes from BD Biosciences plus Chroma's optimized filter sets enable simplified 5-color imaging.

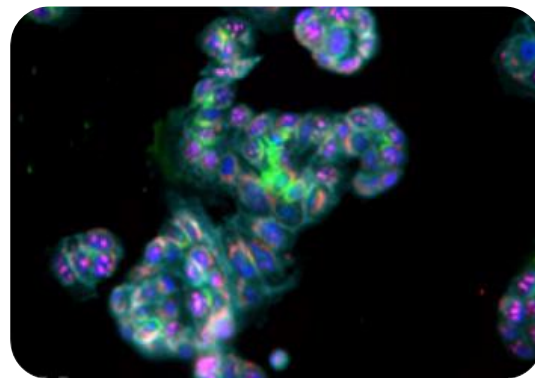
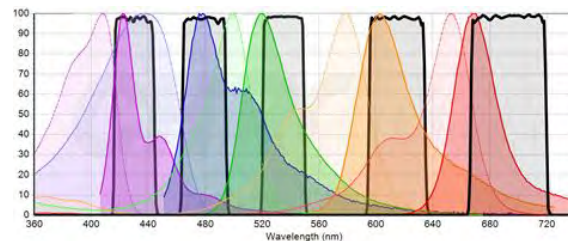
BV421 and BV480 fill a gap in the visible spectrum.

With specific fluorescence filter sets, reliable tools now enable imaging with up to 5 colors using basic tools available to the non-Specialist.

Visit the Chroma website for details about filter sets:
www.chroma.com/products/single-band-sets

Please visit the BD Bioscience website for details about BD Horizon Brilliant™ fluorochromes:
<http://www.bdbiosciences.com/research/cellularimaging>

With **Emission** Filters



THANK YOU

Published in Bellows Falls, Vermont, US



Chroma optical filters and related products may be purchased online or via phone. For more information, please e-mail sales@chroma.com, visit www.chroma.com or call 800.824.7662.



BD Biosciences provides flow cytometers, reagents, tools and a wide range of services. For more information, please visit www.bdbiosciences.com or call 877.232.8995.