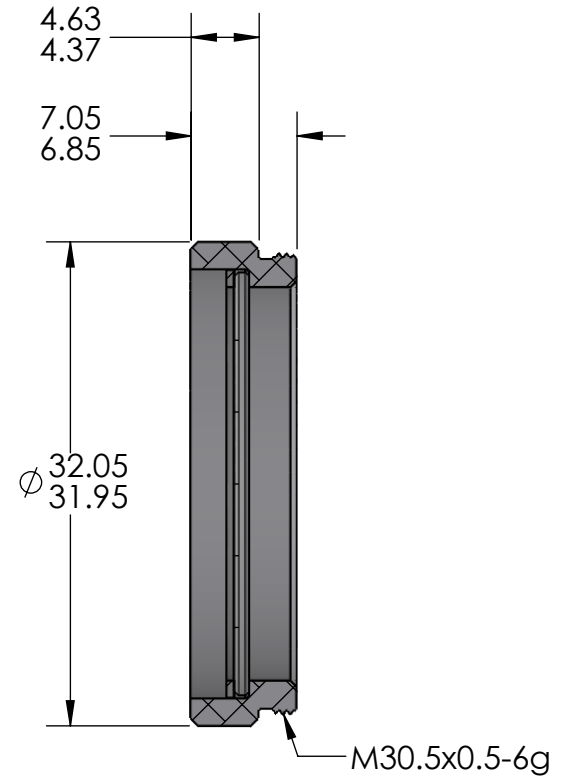
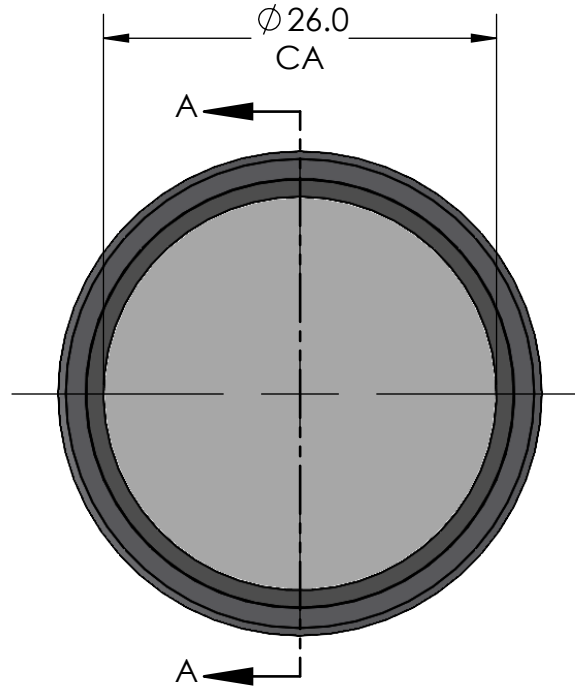
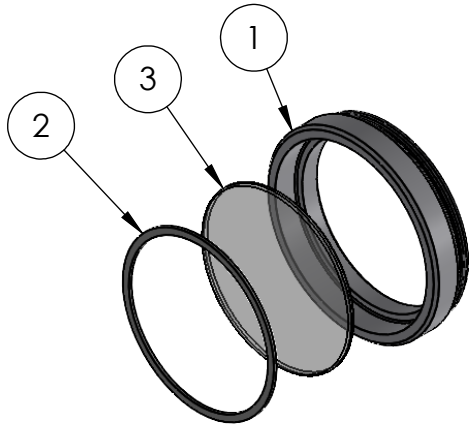



| ITEM NO. | DESCRIPTION | QTY |
|----------|---------------|-----|
| 1 | RNG_M30.5 MV | 1 |
| 2 | WSR_M30.5 MV | 1 |
| 3 | CHROMA FILTER | 1 |

| REVISIONS | | |
|-----------|---|-----------|
| REV | DESCRIPTION | DATE |
| D | PREVIOUSLY PURCHASED AS A SET OF RING/WSR | 1/4/2022 |
| E | UPDATED FORMAT, SPLIT FROM RNG/WSR SET | 5/15/2023 |



SECTION A-A

| | | | | | | | |
|------------------------------------|----------|---------------|--|------|-----------|---|---|
| TITLE | | DRAWN BY | | NAME | DATE | UNLESS OTHERWISE SPECIFIED: DIMENSIONS ARE IN MILLIMETERS TOLERANCES: FRACTIONAL: $\pm 1/64$ ANGULAR: MACH $\pm 0.5^\circ$ BEND $\pm 0.5^\circ$ x. ± 2 .x ± 1 .xx ± 0.05 | CHROMA TECHNOLOGY CORP |
| RNGASSM_M30.5 MV W_WASHER_SALES | | CRP | | CRP | 5/15/2023 | | |
| ID | | MTHDS APPR. | | NAME | DATE | | |
| 037553_SALES | | NJG | | NJG | 5/15/2023 | | |
| SCALE | REVISION | ENG APPR. | | JDA | 5/15/2023 | MATERIAL: |  |
| 2:1 | E | PRD ENG APPR. | | N/A | | FINISH: | |
| SIZE | SHEET | COMMENTS | | | | | |
| A | 1 OF 1 | | | | | | |