

LDI-WF

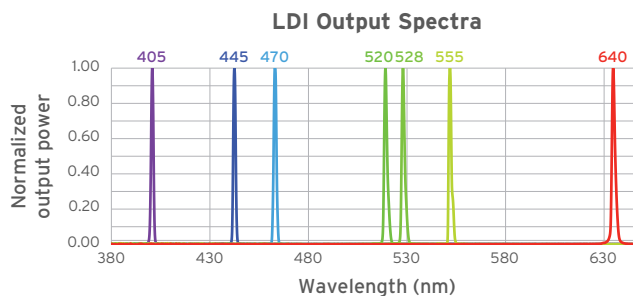
HIGH-PERFORMANCE LASER DIODE ILLUMINATOR FOR WIDEFIELD MICROSCOPY



The LDI-WF is a powerful and inexpensive light engine designed specifically for widefield microscopy. This unit offers the same seven laser lines in the same power range as 89 North's successful LDI, but delivers the light to your microscope via a 3mm Liquid Light guide. The LDI has built-in homogenization and our 555nm laser diode covers the 'green gap' common in other solid state light engines.

LASER LINES AVAILABLE

Laser Line (nm)	Power (mW)
	<i>Out of 3mm Liquid Light Guide</i>
405	200
445	1000
470	1000
520	500
528	440
555	900
640	400



FEATURES AND BENEFITS

High output power	Shorter exposures Faster imaging Faster activation times in optogenetics and photoactivation experiments Faster bleaching times in FRAP experiments
Feedback controlled optical stability	Quantitative imaging, ideally suited for ratiometric imaging More repeatable optogenetics experiments
Up to 100:1 linear dynamic range	Ability to turn power down when needed and maintain stability and quantitative imaging
Up to 7 lines	Covers most of the standard fluorescence probes
No user alignment	Easy to use and maintain

SPECIFICATIONS

Source Type	Laser Diodes						
Lifetime	20,000 hrs - 2 year warranty						
Wavelength (nm)	405	445	470	520	528	555	640
Width (nm)	0.6	2-3	2-3	4-6	4-6	0.6	0.8-1.5
CWL Range	398-406	440-446	465-470	520-522	527-528	553-555	632-643
Stability (rms)*	<2%	<2%	<2%	<2%	<2%	<2%	<2%
Optical Power Min (mW)	200	1000	1000	500	440	900	400
Rise*	<10 μ s	<10 μ s	<10 μ s	<10 μ s	<10 μ s	<1 ms	<10 μ s
Max On/Off Frequency (Hz)	>1000	>1000	>1000	>1000	>1000	200	>1000
Output Options	3mm Liquid Light Guide						
Control Options	TTL (>2.3 V) Analog (0-5 V) USB-DSP (virtual COM port) - SDK available upon request						
Safety	Interlocked housing Safety interlock Key interlock						
Dimensions	12.5" x 9.2" x 5.75"						
Weight	~9 lbs						
Operating Temperature	10-32 °C per our product spec						
Storage Temperature	-18-50 °C						
Humidity	<80% non-condensing, per our spec						
Voltage	90-220 V AC, 50-60 Hz						
Fuse	None						

*for power settings >20%

This product is subject to FCC rules. Delivery is contingent upon demonstrated compliance with the applicable equipment authorization and technical requirements.

Applications

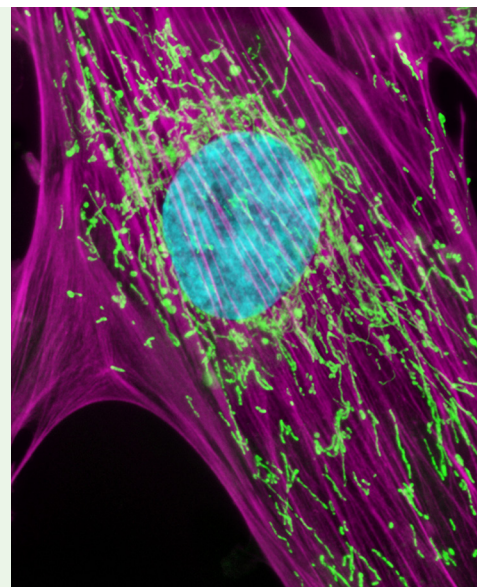
General Epifluorescence

Single Molecule Imaging

Spinning Disk Confocal Microscopy with Crest X-Light V2 LFOV

Super Resolution SIM Imaging with Crest VCS or Live SR

PALM/STORM



DANGER - LASER RADIATION
AVOID EYE OR SKIN EXPOSURE TO
DIRECT OR SCATTERED RADIATION
CLASS 4 LASER PRODUCT

89 North and the 89 North logo are registered trademarks of 89 North, Inc. All specifications are subject to change.



20 Winter Sport Lane, Suite 135, Williston, VT 05495 sales@89north.com www.89north.com
toll free 1.877.417.8313 main +1.802.881.0302 fax +1.802.881.0308